

For over 25 years Crystal Technology and Industries has been driven to deliver exceptional value to the scientific marketplace by developing innovative equipment and Cryo Storage Solutions for today's scientist.



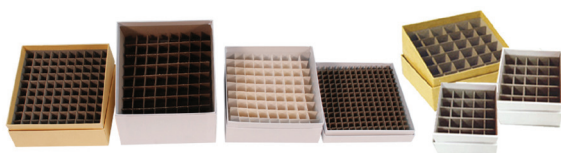
## **Cryo Freezer Boxes – Protect Your Samples. Optimize your Space. Cryo Storage that Delivers.**

*Smart Solutions for all of your Cryo Storage Needs!*



### **Hinged Lid Fiberboard Boxes**

- **Waterproof Fiberboard** - White, Purple, Green
- 81 Section Cell Divider, indexed on lid & sides
- Never misalign or lose the lid
- Stands up to repeated freezing and thawing



### **Cardboard Boxes**

- Water repellent cardboard construction
- White, Yellow, or Custom
- Wide variety of cell dividers
- Sizes: 1", 2", 3", 3.75", 5"
- Widest variety of economical storage options



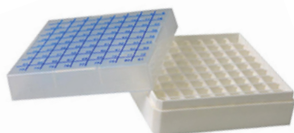
### **100 Cell Hinged Plastic Boxes**

- Polypropylene construction
- 100 section cell divider, index hot stamped into grid
- For all microtubes 2mL and standard 1.2mL cryo vials



### **Polycarbonate Boxes**

- Polycarbonate construction with drain holes
- 81 or 100 section cell divider
- Keyed lid prevents misalignment
- Designed for temperatures -196°C to 121°C
- Recommended for LN2 Storage



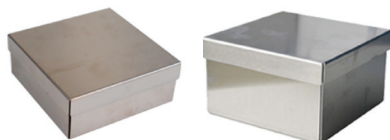
### **Polypropylene Boxes**

- Polypropylene construction with drain holes
- 81 or 100 section cell divider
- Keyed lid prevents misalignment
- Designed for temperatures down to -80°C



### **Aluminum Boxes**

- Aluminum construction with drain holes
- Open slots in corners
- Available with or without cardboard cell dividers
- Lightweight superior sample protection

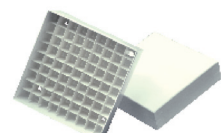


### **Stainless Steel Boxes**

- Stainless Steel construction with drain holes
- Open slots in corners
- Available with or without cardboard cell dividers
- Superior sample protection

# Cardboard Freezer Boxes

Custom Boxes are Available  
(color, text and graphics)



Part Number	Description	Color	Dimension LxWxH
SB2CC-H-81	• <b>Waterproof</b> Fiberboard freezer boxes	White	5-1/4 x 5-1/4 x 2 in 133 x 133 x 51 mm
SB2CC-H-81-P-W	• Hinged Lid Fiberboard – Never misalign or lose the lid	Purple	
SB2CC-H-81-G-W	• Holds up to Repeated Freezing & Thawing With 81-Place Cell Divider	Green	
	• 3 Color Options		

Part Number	Description	Color	Dimension LxWxH
SB2CC	• White water repellant cardboard freezer boxes for storage of samples or tubes	White	5-1/4 x 5-1/4 x 2 in 133 x 133 x 51 mm
SB2CC-XX*	• Supplied with or without cell dividers • Standard boxes have 4 drain holes in each corner		
SB2C	• Yellow water repellant cardboard freezer boxes for storage of samples or tubes	Yellow	
SB2C-XX*	• Supplied with or without cell dividers • Standard boxes have 4 drain holes in each corner		
SB2CC-LP	• White water repellant cardboard freezer boxes with low profile lid	White	5-5/16 x 5-5/16 x 1-15/16 in 134.8 x 134.8 x 48.8 mm
SB2CC-XX*-LP	• Supplied with or without cell dividers.		
SB3C	• Large 3" white water repellant cardboard freezer boxes	White	5-1/4 x 5-1/4 x 3 in 133 x 133 x 75 mm
SB3C-XX*	• Supplied with or without cell dividers		
SB3.75C	• White water repellant cardboard freezer boxes for storage of samples or tubes	White	5-1/4 x 5-1/4 x 3-7/8 in 133 x 133 x 98 mm
SB3.75C-XX*	• Supplied with or without cell dividers • Standard boxes have 4 drain holes in each corner		
SB4C	• White water repellant cardboard freezer boxes for 15mL or 50mL centrifuge tubes are supplied with or without cell dividers	White	5-13/16 x 5-13/16 x 4-15/16 in 148 x 148 x 125 mm
SB4C-XXX**	• Boxes have 4 drain holes in each corner		
SB10C	• Extra large yellow water repellant freezer boxes with drain holes	Yellow	10-11/16 x 5-3/16 x 8-5/16 in 271.5 x 132.5 x 211.5 mm
BB3C	• Yellow water repellant cardboard freezer boxes for storage of samples or tubes	Yellow	5-3/4 x 5-3/4 x 3 in 146 x 146 x 76 mm
BB3C-100	• Large 3" yellow water repellant cardboard freezer boxes with 100 cell divider included		
MB2C	• White water repellant mini-cardboard freezer boxes for storage of samples or tubes • Supplied with or without 25-cell dividers • Mini boxes have drain slots	White	3 x 3 x 2 in 75 x 75 x 51 mm
MB2C-25			
MB3C			3 x 3 x 3 in
MB2C-25			75 x 75 x 76 mm

\* To order, replace XX with 100, 81, 64, 49, 36, 25, or 16 for cell dividers.

\*\* To order, replace XXX with 16 or 36 for cell dividers.

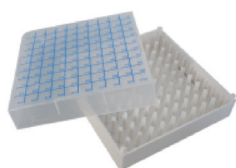




## 100 Cell Hinged Plastic Boxes

100-cell hinged top plastic boxes made of polypropylene offer an alternative storage system for all microtubes up to 2.0mL and standard 1.2mL cryovials. The grid is alpha-numerically matrixed with 1-10 and A-J characters hot stamped directly onto the grid for fast, easy sample identification. Boxes fit into standard freezer racks and are available in natural and five different colors.

Part Number	Cell Number	Dimension LxWxH	Cell Opening
PP2-100	100	5-9/6 x 6 x 2-1/8 in 141 x 152 x 54 mm	1/2 in (12.5 mm)
PP2-100-A			
PP2-100X8			
* Specify Color: B (Blue), G (Green), O (Orange), P (Pink), N (Natural) or Y (Yellow)			



PPP2-100

## Polypropylene Boxes

Polypropylene 81 or 100 cell 2" boxes hold most popular cryo and cold storage vials and fit into standard freezer racks. These boxes offer a convenient and cost effective alternative to polycarbonate boxes for storage of samples. Boxes have clear lids with locator grids to facilitate sample identification. Polypropylene boxes are designed to withstand temperatures down to -80°C. Storage of polypropylene boxes in liquid nitrogen is not recommended. Boxes have drain holes for venting and safety. Keyed lid prevents misalignment of grid.

Part Number	Cell Number	Dimension LxWxH	Cell Opening
PPP2-100	100	5-1/4 x 5-1/4 x 2 in 133 x 133 x 51 mm	7/16 in (10.5 mm)
PPP2-81	81		1/2 in (12.5 mm)



PB2-100



MPB2-25

## Polycarbonate Boxes

Polycarbonate 81 or 100 cell 2" boxes hold most popular cryo and cold storage vials and fit into standard freezer racks. Boxes have clear lids with locator grids to facilitate sample identification. Polycarbonate boxes are designed to withstand temperature extremes of -196°C to 121°C. Boxes have drain holes for venting and safety. Keyed lid prevents misalignment of grid.

Part Number	Cell Number	Dimension LxWxH	Cell Opening
PB2-100	100	5-1/4 x 5-1/4 x 2-1/16 in 133 x 133 x 52 mm	1/2 in (12.5 mm)
PB2-81	81		1/2 in (13 mm)
PB4-81	81	5-1/4 x 5-1/4 x 3-11/16 in 133 x 133 x 94 mm	1/2 in (12.5 mm)
MPB2-25	25	3 x 3 x 2-1/16 in 76 x 76 x 53mm	3/8 in (12.8 mm)

## Stainless Steel Boxes

Stainless steel boxes come with or without cardboard dividers and fit into standard freezer racks.



Part Number	Description / Capacity	Dimension Wt×Wt×Ht (Lid)	Dimension Wb×Wb×Hb
<b>SB2S</b>	Standard 2" Stainless Steel Box w/Drain Hole	5-1/4 × 5-1/4 × 2 in 133 × 133 × 51 mm	5 × 5 × 1-15/16 in 127.7 × 127.7 × 49 mm
<b>SB2S-XX*</b>	Standard 2" Stainless Steel Box w/Divider & Drain Hole	5-1/4 × 5-1/4 × 2 in 133 × 133 × 51 mm	5 × 5 × 1-15/16 in 127.7 × 127.7 × 49 mm
<b>SB3S</b>	Standard 3" Stainless Steel Box w/Drain Hole	5-1/4 × 5-1/4 × 3 in 133 × 133 × 75 mm	5 × 5 × 2-15/16 in 127.7 × 127.7 × 74 mm
<b>SB3S-XX*</b>	Standard 3" Stainless Steel Box w/Divider & Drain Hole	5-1/4 × 5-1/4 × 3 in 133 × 133 × 75 mm	5 × 5 × 2-15/16 in 127.7 × 127.7 × 74 mm

\* To order, replace XX with 144, 100, 81, 64, 49, 36, 25, or 16 for cell dividers.



## Aluminum Boxes

Aluminum boxes come with or without cardboard dividers and fit into standard freezer racks.

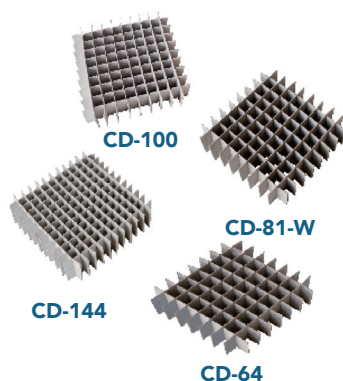
Part Number	Description / Capacity	Dimension Wt×Wt×H	Dimension Wb×Wb×Hb
<b>SB2A</b>	Standard 2" Aluminum Box w/Drain Hole	5-1/4 × 5-1/4 × 2 in 133 × 133 × 51 mm	5 × 5 × 1-15/16 in 127.7 × 127.7 × 49 mm
<b>SB2A-XX*</b>	Standard 2" Aluminum Box w/Divider & Drain Hole		
<b>SB3A</b>	Standard 3" Aluminum Box w/Drain Hole	5-1/4 × 5-1/4 × 3 in 133 × 133 × 75 mm	5 × 5 × 2-15/16 in 127.7 × 127.7 × 74 mm
<b>SB3A-XX*</b>	Standard 3" Aluminum Box w/Divider & Drain Hole		

\* To order, replace XX with 144, 100, 81, 64, 49, 36, 25, or 16 for cell dividers.

## Cell Dividers

Standard cardboard cell dividers (CD-XX) fit all 2" and 3" standard cardboard and metal boxes. Dividers for 4" centrifuge tube boxes (CD4-XX) and mini box (MCD-25) are also available.

Sold in packs of 12.



Part Number	Cell Number	Dimension LxWxH	Cell Opening
<b>CD-169</b>	169	4-7/8 × 4-7/8 × 1-5/16 in 123.4 × 123.4 × 33 mm	3/8 in (8.74 mm)
<b>CD-144</b>	144		3/8 in (9.52 mm)
<b>CD-100</b>	100		7/16 in (11.5 mm)
<b>CD-96</b>	96	7 × 4-11/43 × 1-1/2 in 178 × 118.4 × 38 mm	9/16 in (14 mm)
<b>CD-64</b>	64	4-7/8 × 4-7/8 × 1-5/16 in 123.4 × 123.4 × 33 mm	9/16 in (14 mm)
<b>CD-49</b>	49		11/16 in (16.7 mm)
<b>CD-36</b>	36		13/16 in (20 mm)
<b>CD-25</b>	25		15/16 in (24.5 mm)
<b>CD-16</b>	16		1-3/16 in (30.2 mm)
<b>CD4-16</b>	16	5-7/16 × 5-7/16 × 2-3/4 in 138 × 138 × 70 mm	1-5/16 in (33.85 mm)
<b>CD4-36</b>	36		7/8 in (22.25 mm)
<b>CD4-64</b>	64		5/8 in (16.45 mm)
<b>CD-49-W</b>	49	4-7/8 × 4-7/8 × 1-1/4 in 123.4 × 123.4 × 31.5 mm	11/16 in (17 mm)
<b>CD-81-W</b>	81	4-7/8 × 4-7/8 × 1-5/16 in 124.5 × 124.5 × 33 mm	1/2 in (12.8 mm)
<b>CD-100-W</b>	100		7/16 in (11.5 mm)
<b>MCD-25</b>	25	2-11/16 × 2-11/16 × 1-5/16 in 67.6 × 67.6 × 33 mm	1/2 in (12.8 mm)