



# CryoCommand™

For over 25 years Crystal Technology & Industries has been driven to deliver exceptional value to the scientific marketplace. Our engineers collaborate with top-tier research institutions to design & develop innovative Benchtop Equipment and Cryo Storage Solutions for today's Scientist.

An ideal solution for replacing ice baths. Avoids the mess and hassle of consumables while providing superior temperature stability and uniformity.



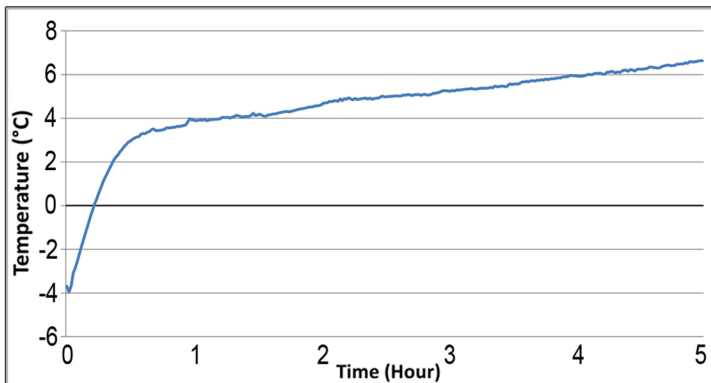
Internal Dimensions:  
305 x 224mm (8 3/4" X 12")

## Product Features:

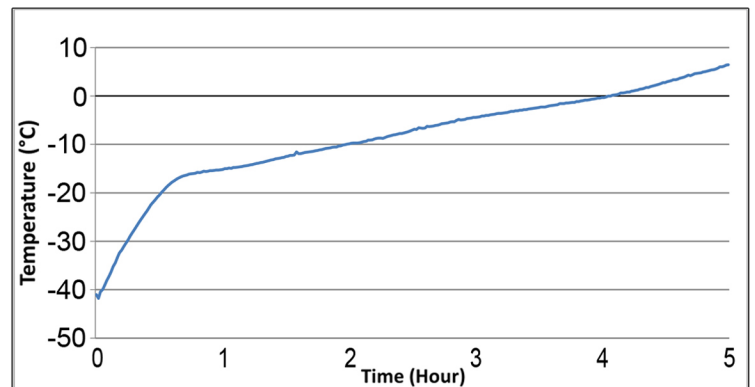
- Provides low temperature protection for biological samples
- Choice of Cryo-Cores for different storage temperatures
- Highly durable and suitable for frequent and repeated use
- Ice and Consumable free solution for easier workflow
- Applicable to a variety of different Tube Modules
- Holds multiple boxes of samples or vaccines
- Easy to clean and disinfect



CryoCommand PL6  
Sample Temperatures: **CL Cryo-Core**



CryoCommand PF6  
Sample Temperatures: **CF Cryo-Core**



A variety of Tube Modules are available.  
6 Tube Modules sit on top of the 6 Cryo-Core Modules

*(Tube modules are not included. Must be ordered separately)*



CM01  
30 x 2ml



CM02  
48 x 1.5ml



CM03  
30 x 5ml



CM04  
96 x PCR





# CryoCommand™

For over 25 years Crystal Technology & Industries has been driven to deliver exceptional value to the scientific marketplace. Our engineers collaborate with top-tier research institutions to design & develop innovative Benchtop Equipment and Cryo Storage Solutions for today's Scientist.

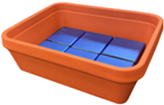
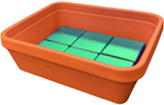
## Cryo-Cores:

Cryo-Core	Product Name	Temp. Range	Freezer Temperature	Freeze Time	Dimensions
CL	Cooling Core	0.5°C ~ 4°C	-20°C	4h+	105 x 100 x 26 mm
		0.5°C ~ 4°C	-80°C	2h+	105 x 100 x 26 mm
CF	Freeze Core	-18°C ~ -4°C	-20°C	6h+	105 x 100 x 26 mm
		-18°C ~ -4°C	-80°C	3h+	105 x 100 x 26 mm

## Tube Modules:

Tube Module	Part Number	Specifications	Dimensions
2 ml Tubes	CM01	30 x 2 ml Cryo Tube	119 x 101 x 38 mm
1.5 ml Tubes	CM02	48 x 1.5 ml Cryo Tube	119 x 101 x 38 mm
5 ml Tubes	CM03	30 x 5 ml Cryo Tube	119 x 101 x 38 mm
PCR Tubes	CM04	96 x PCR Module	119 x 101 x 38 mm

## Ordering Information:

CryoCommand™	Part Number
 CryoCommand PL6 (Comes with (6) CL Cryo-Cores)	PL6
 CryoCommand PF6 (Comes with (6) CF Cryo-Cores)	PF6

Tube Modules are sold separately. Tube Modules may be ordered as an accessory. Any combination of (6) Tube Modules will fit directly on top of the (6) included Cryo-Cores.